

# KENTUCKY POWER

An AEP Company

## WORKING FOR KENTUCKY

Kentucky Power, headquartered in Ashland, provides service to approximately 162,500 customers in all or part of 20 eastern Kentucky counties. Kentucky Power's distribution operations work from service centers in Ashland, Hazard and Pikeville and from area offices in Paintsville and Whitesburg.

Kentucky Power is proud to carry on a tradition of customer service and community leadership for more than a century. We provide electricity to power the economy and invest millions of dollars in capital improvements and in communities to help meet economic development, environmental, educational and other needs.



### LEADERSHIP

#### Cindy Wiseman

President and Chief Operating Officer

#### Michele Ross

VP, Distribution Region Operations

#### Jeffrey Newcomb

VP, Regulatory & Finance

#### Amy Elliott

VP, External Affairs & Customer Services

#### Tim Kerns

SVP, Fossil Hydro Generating Assets

#### Archie Pugh

VP, Transmission Field Services

### COUNTIES SERVED

Boyd · Breathitt · Carter · Clay  
Elliott · Floyd · Greenup · Johnson  
Knott · Lawrence · Leslie · Letcher  
Lewis · Magoffin · Martin · Morgan  
Owsley · Perry · Pike · Rowan

### POWER PLANTS

#### Big Sandy Power Plant

Louisia, KY

Generation Capacity: 295 Megawatts

Natural Gas Use: 2.3 Million Cubic Feet per Hour

#### Mitchell Power Plant\*

Moundsville, WV

Generation Capacity: 1,560 Megawatts

Annual Coal Use: 1.4 Million Tons

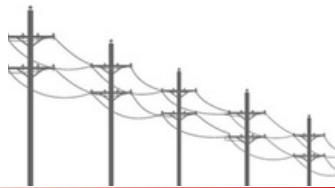
\*Kentucky Power owns a 50 percent interest in this plant and its generation

KENTUCKYPOWER.COM  
(800) 572-1113

### OPERATING INFORMATION

AEP Total Employees: 16,733

Kentucky Power Employees: 250



Approximate Number of Customers: 162,500

Operational Square Miles: 4,895

Miles of Power Lines: 11,401

Miles of Distribution Lines: 10,130

Miles of Transmission Lines: 1,271

Number of Distribution Poles: 220,338

Number of Transmission Poles: 6,769

### HELPING THE LOCAL ECONOMY

*Annual Totals*

Total Wages: \$47.6 million

Federal Taxes: \$4.8 million

Local and Regional Economic Development Contributions: \$600,000

Economic Effects of Employee Spending in the State: \$20 million

Aid to Customers in Need:

\$280,000 for weatherization

\$2 million in Home Energy Assistance in Reduced Temperatures (HEART) and Temporary Heating

Assistance in Winter (THAW) financial assistance.

State and Local Taxes: \$12 million

Philanthropic Giving in Kentucky: \$425,000

### CUSTOMER INFORMATION

Electric Sales (kWh): 5,168,345,100

Residential: 1,755,605,800

Commercial: 1,352,741,600

Industrial: 2,059,997,700

Average Base Rate cents/kWh

14.02

11.87

7.25

(Excludes any applicable taxes)

### EXTERNAL AFFAIRS

#### Amy Elliott

VP, External Affairs & Customer Services

(606) 327-2612

ajelliott@aep.com

Frankfort, KY

#### Ryan Howell

External Affairs Manager

(606) 218-7632

rmhowell@aep.com

Pikeville, KY

#### Ryan Lake

External Affairs Manager

(606) 646-9148

rlake@aep.com

Ashland, KY

### ECONOMIC DEVELOPMENT

#### Amanda Clark

Economic & Business Development Manager

(606) 327-2621

acclark1@aep.com

Ashland, KY

### MEDIA CONTACT

#### Sarah Nusbaum

Corporate Communications Manager

(606) 327-2602

smnusbaum@aep.com

Ashland, KY